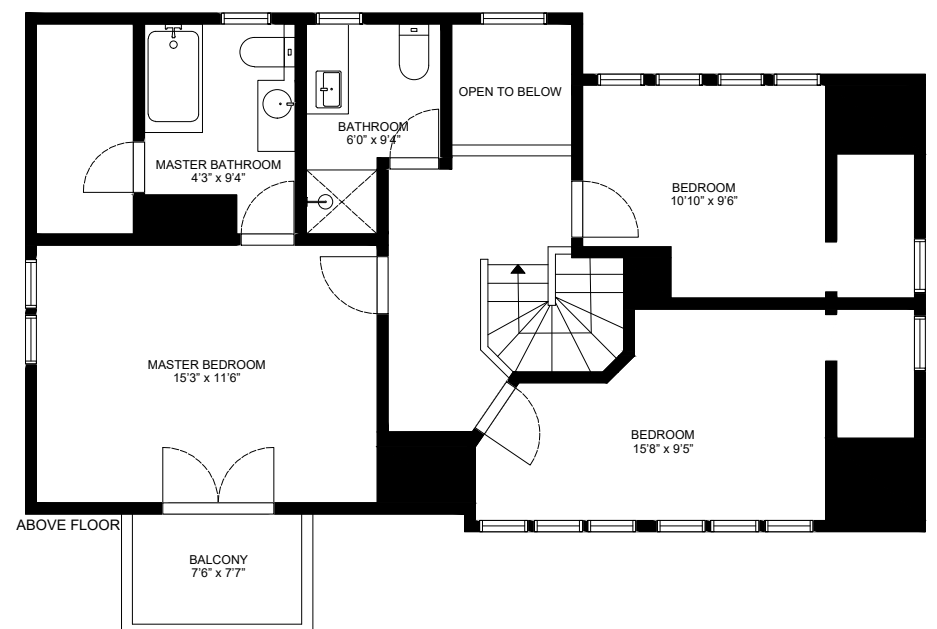


BASEMENT



ABOVE FLOOR



MAIN FLOOR

AGENT NAME : Greyden Douglas  
 Oakwyn Realty  
 604-218-2289  
 greyden@raincityproperties.com

PRESENTED BY 

ADDRESS  
 1021 Marine Drive, West Vancouver

DATED 06-03-2021  
 SCALE N.T.S

AREA CALCULATION  
 MAIN FLOOR: 1091 sq. ft.  
 ABOVE FLOOR: 822 sq. ft.  
 BASEMENT: 1136 sq. ft.  
 TOTAL LIVING AREA: 3049 sq. ft.

PLEASE NOTE THIS FLOOR PLAN IS FOR MARKETING PURPOSES AND IS TO BE USED AS A GUIDE ONLY. IT IS NOT INTEND FOR ANY CONTRACT, WARRANTY OR ENGINEERING PUIURPOSES. ALL EFFORTS HAVE BEEN MAKE TO ENSURE ITS ACCURACY AT TIME OF PRINT. CHANGES MAY BE MADE DURING THE DEVELOPMENT PROCESS AND DIMENSIONS, FIXTURES, FITTINGS, DINISHES AND SPECIFICAIONS ARE SUBJECT TO CHANGE WITHOUT NOTICE. WINDOW PLACEMENT, BALCONY EACH PLAN TYPE. PLEASE REFER TO CONTRACT DRAWING FOR MORE ACCURATE INFORMATION ON PARTICULAR PROPERTY. ALL MEANSUREMENTS ARE APPROXIMATE. THE ABOVE INFORMATION IS FROM SOURCES BELIVED RELIABLE BUT SHOULD BE RELIED UPON WITHOUT VERIFICATION. THE BROKERAGE AND THE AGENT ASSUME NO RESPONSIBILITY FOR ITS ACCURACY.