

Edmund Lee
Real Estate Consultant

778-682-0288 edleerealty@gmail.com

Royal Pacific Realty Corp
#100-1200 West 73rd Avenue Vancouver BC V6P 6G5
604.266.8989 www.royalpacific.com

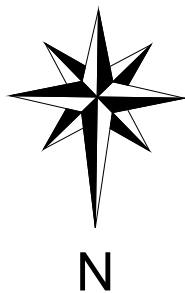
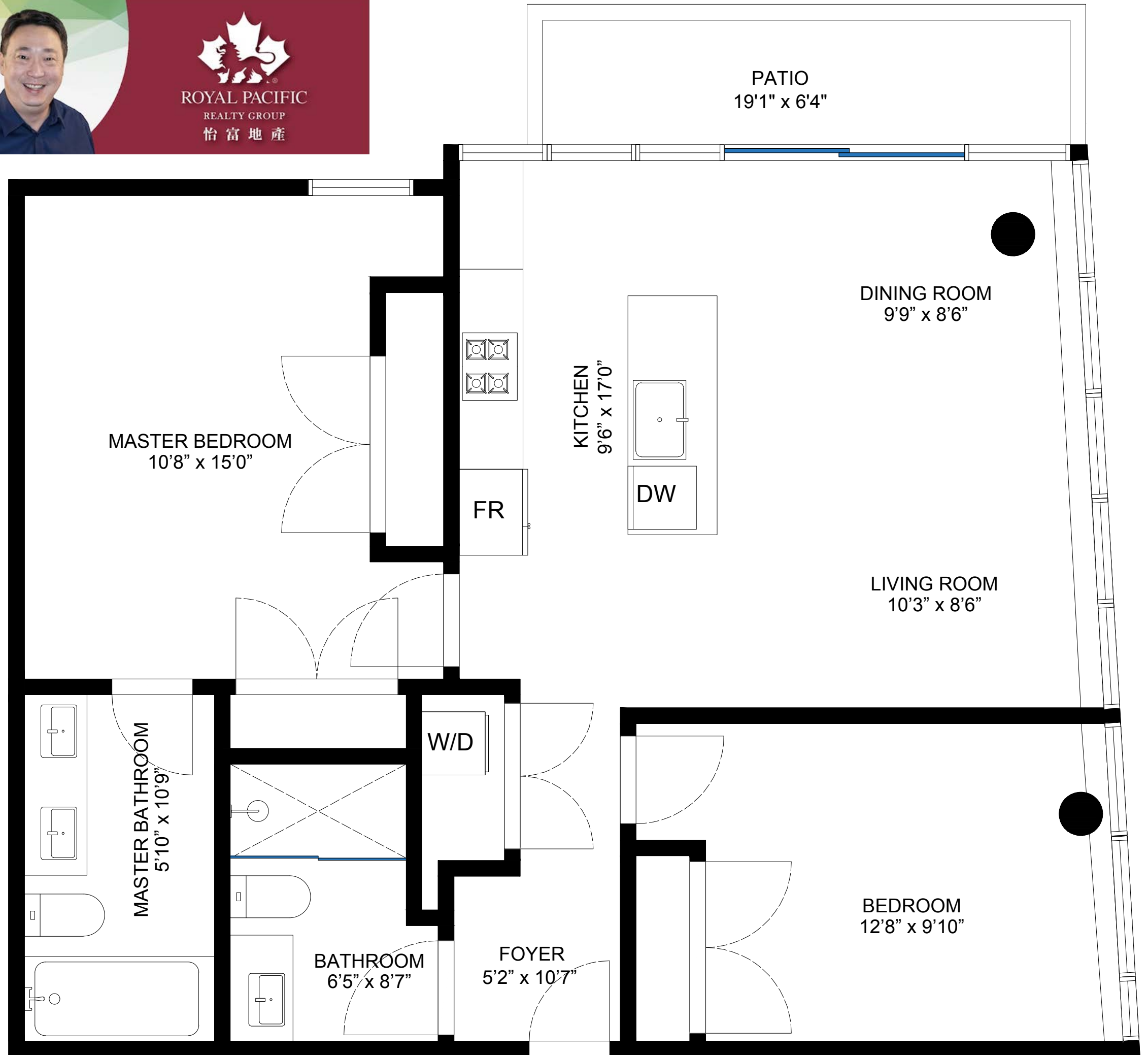


ADDRESS

103-5699 Baillie Street, Vancouver

AREA CALCULATION

TOTAL LIVING AREA: 968 sq ft



PRESENTED BY

