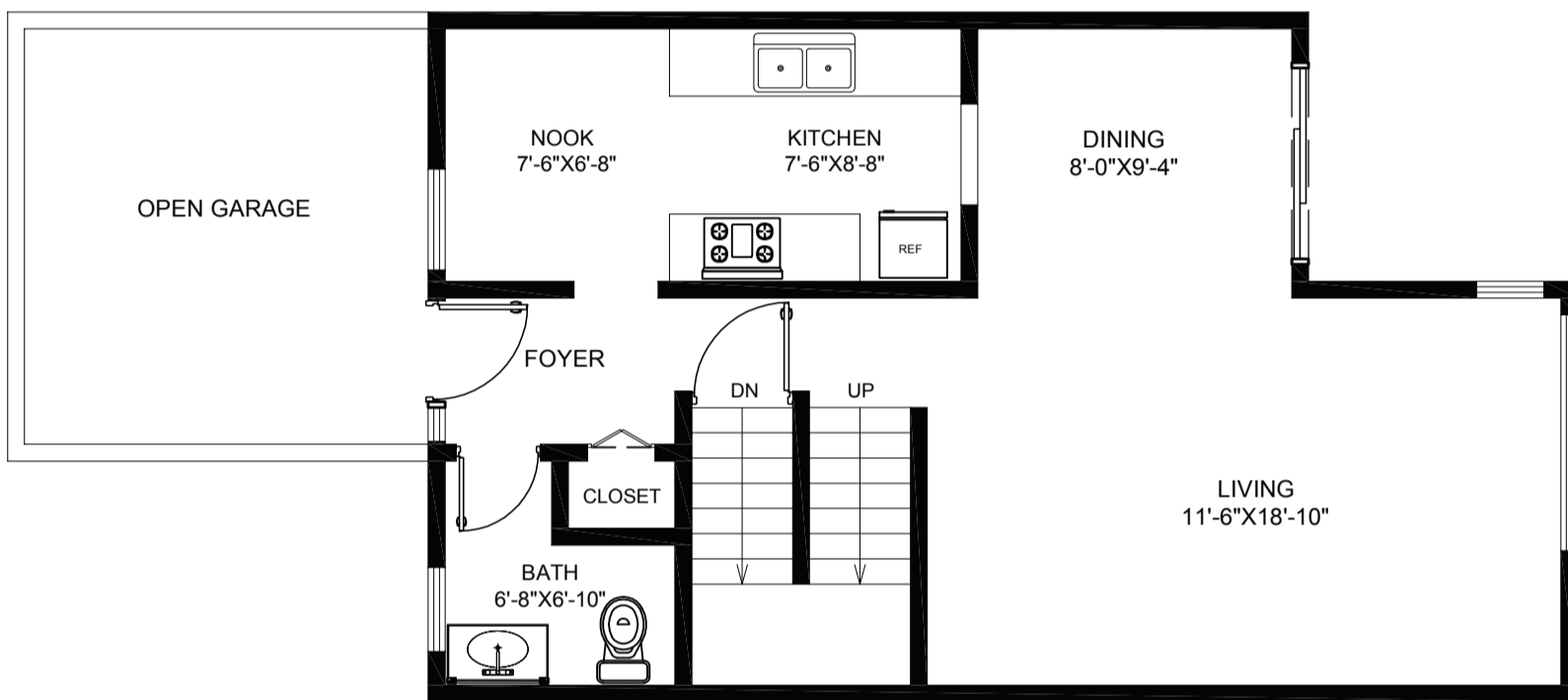
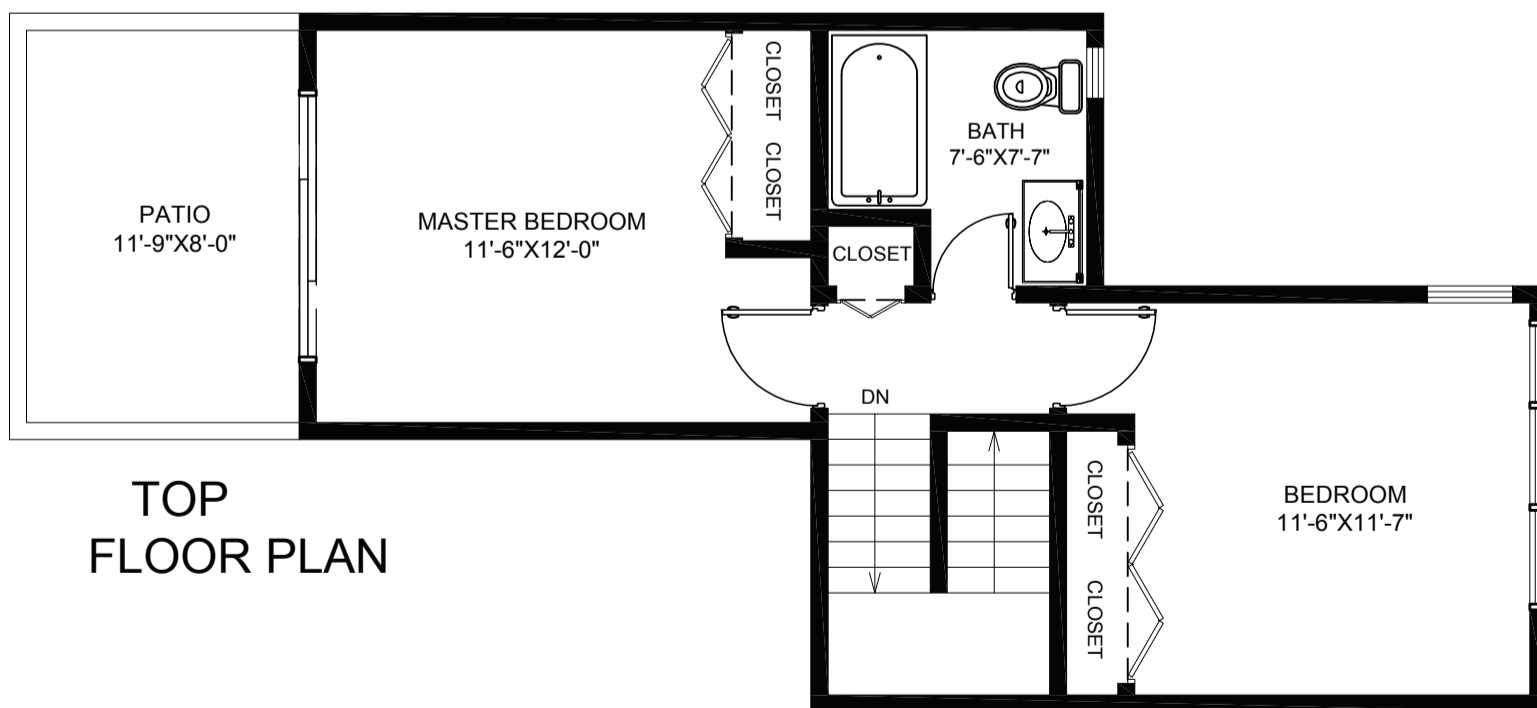


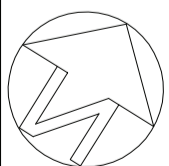
UNFINISHED BASEMENT FLOOR PLAN



MAIN FLOOR PLAN



TOP FLOOR PLAN



AGENT NAME: Leigh McLean Email: Leigh@mcleanhomes.ca Phone: (604) 537-8015 Stonehaus Realty PRESENTED BY:	ADDRESS 1835 Lilac Dr, Surrey		AREA CALCULATION UNFINISHED BASEMENT 440 sqft MAIN FLOOR 570 sqft TOP FLOOR 526 sqft TOTAL FINISHED FLOOR AREA 1096 sqft TOTAL FLOOR AREA 1536 sqft		DISCLAIMER: PLEASE NOTE THIS FLOOR PLAN IS FOR MARKETING PURPOSES AND IS TO BE USED AS A GUIDE ONLY. IT IS NOT INTENDED FOR ANY CONTRACT, WARRANTY OR ENGINEERING PURPOSES. ALL EFFORTS HAVE BEEN MADE TO ENSURE ITS ACCURACY AT TIME OF PRINT. CHANGES MAY BE MADE DURING THE DEVELOPMENT PROCESS AND DIMENSIONS, FIXTURES, FITTINGS, FINISHES AND SPECIFICATIONS ARE SUBJECT TO CHANGE WITHOUT NOTICE. WINDOW PLACEMENT, BALCONY CONFIGURATION, WARDROBE SIZES AND LIVING AREAS MAY VARY SLIGHTLY WITHIN EACH PLAN TYPE. PLEASE REFER TO CONTRACT DRAWINGS FOR MORE ACCURATE INFORMATION ON A PARTICULAR PROPERTY. ALL MEASUREMENTS ARE APPROXIMATE. THE ABOVE INFORMATION IS FROM SOURCES BELIEVED RELIABLE BUT SHOULD NOT BE RELIED UPON WITHOUT VERIFICATION. THE BROKERAGE AND THE AGENT ASSUME NO RESPONSIBILITY FOR ITS ACCURACY.
	DATED, 29 April, 2021	SCALE, N.T.S			