

MAIN FLOOR PLAN

AGENT:
Keson Mui
business@almondtreemedia.ca
Ph No: 604-767-0998

PRODUCED BY:
Almond Tree
Media Inc.

ADDRESS:
**4271 Candlewood Drive,
Richmond**

DATE:
21 MARCH, 2021

ORIGINAL SCALE:
1/8" = 1'-0"

AREA CALCULATION

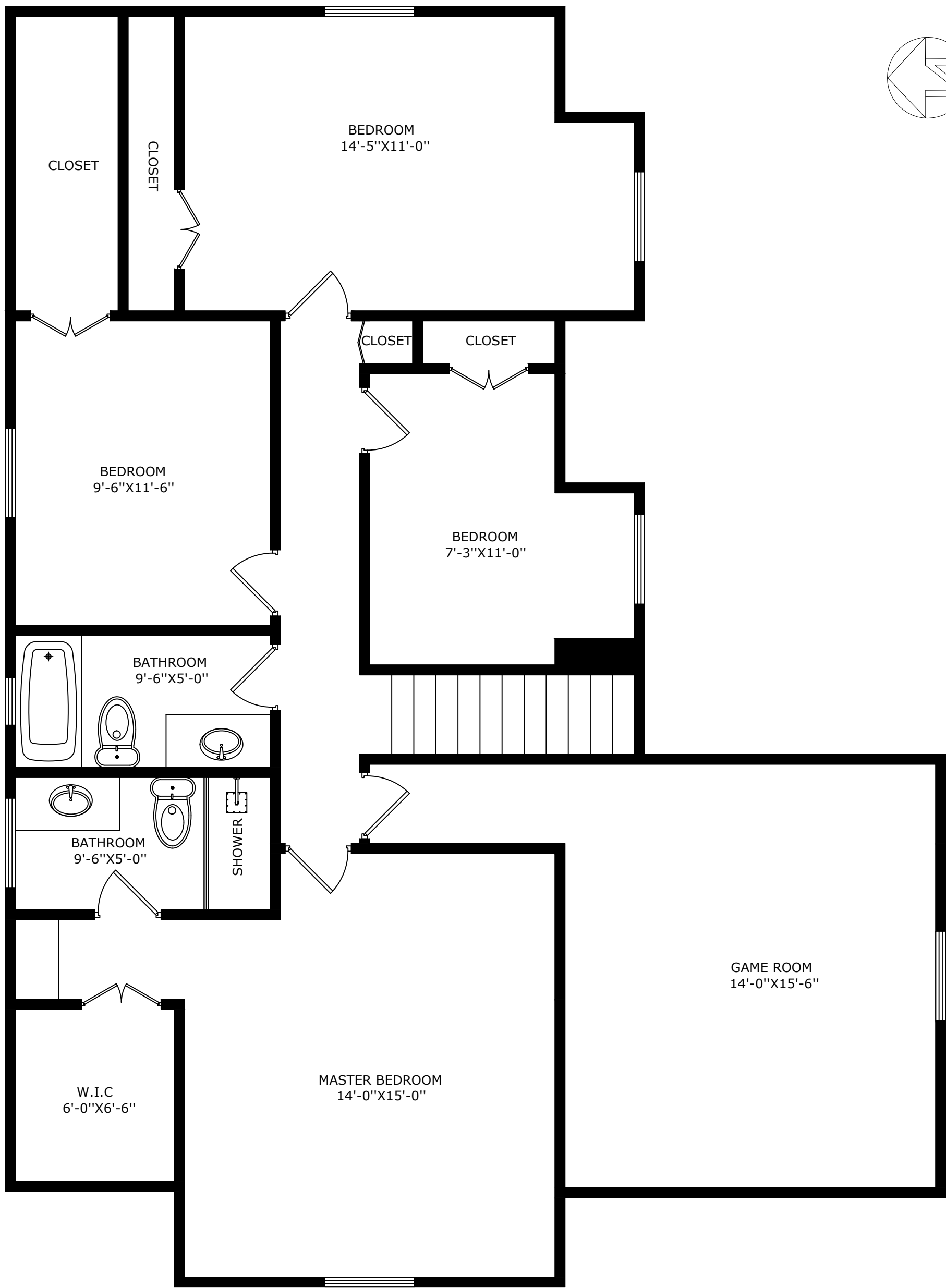
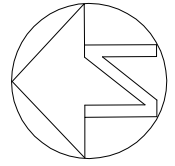
MAIN FLOOR AREA:
1233 Sq. Ft.

UPPER FLOOR AREA
1374 Sq. Ft.

TOTAL LIVING AREA:
2607 Sq. Ft.

DISCLAIMER:

PLEASE NOTE THIS FLOOR PLAN IS FOR MARKETING PURPOSES AND IS TO BE USED AS A GUIDE ONLY. IT IS NOT INTENDED FOR ANY CONTRACT, WARRANTY OR ENGINEERING PURPOSES. ALL EFFORTS HAVE BEEN MADE TO ENSURE ITS ACCURACY AT TIME OF PRINT. CHANGES MAY BE MADE DURING THE DEVELOPMENT PROCESS AND DIMENSIONS, FIXTURES, FITTINGS, FINISHES AND SPECIFICATIONS ARE SUBJECT TO CHANGE WITHOUT NOTICE. WINDOW PLACEMENT, BALCONY CONFIGURATION, WARDROBE SIZES AND LIVING AREAS MAY VARY SLIGHTLY WITHIN EACH PLAN TYPE. PLEASE REFER TO CONTRACT DRAWINGS FOR MORE ACCURATE INFORMATION ON A PARTICULAR PROPERTY. ALL MEASUREMENTS ARE APPROXIMATE. THE ABOVE INFORMATION IS FROM SOURCES BELIEVED RELIABLE BUT SHOULD NOT BE RELIED UPON WITHOUT VERIFICATION. THE BROKERAGE AND THE AGENT ASSUME NO RESPONSIBILITY FOR ITS ACCURACY.



UPPER FLOOR PLAN

AGENT:
Keson Mui
 business@almondtreemedia.ca
 Ph No: 604-767-0998

PRODUCED BY:

Almond Tree
 Media Inc.

ADDRESS:
 4271 Candlewood Drive,
 Richmond

DATE:
 21 MARCH, 2021

ORIGINAL SCALE:
 1/8" = 1'-0"

AREA CALCULATION

MAIN FLOOR AREA:
 1233 Sq. Ft.

UPPER FLOOR AREA
 1374 Sq. Ft.

TOTAL LIVING AREA:
 2607 Sq. Ft.

DISCLAIMER:

PLEASE NOTE THIS FLOOR PLAN IS FOR MARKETING PURPOSES AND IS TO BE USED AS A GUIDE ONLY. IT IS NOT INTENDED FOR ANY CONTRACT, WARRANTY OR ENGINEERING PURPOSES. ALL EFFORTS HAVE BEEN MADE TO ENSURE ITS ACCURACY AT TIME OF PRINT. CHANGES MAY BE MADE DURING THE DEVELOPMENT PROCESS AND DIMENSIONS, FIXTURES, FITTINGS, FINISHES AND SPECIFICATIONS ARE SUBJECT TO CHANGE WITHOUT NOTICE. WINDOW PLACEMENT, BALCONY CONFIGURATION, WARDROBE SIZES AND LIVING AREAS MAY VARY SLIGHTLY WITHIN EACH PLAN TYPE. PLEASE REFER TO CONTRACT DRAWINGS FOR MORE ACCURATE INFORMATION ON A PARTICULAR PROPERTY. ALL MEASUREMENTS ARE APPROXIMATE. THE ABOVE INFORMATION IS FROM SOURCES BELIEVED RELIABLE BUT SHOULD NOT BE RELIED UPON WITHOUT VERIFICATION. THE BROKERAGE AND THE AGENT ASSUME NO RESPONSIBILITY FOR ITS ACCURACY.