

BELOW FLOOR PLAN

AGENT:

ALEX LEE
alexleesk@gmail.com
604-551-2828

PRODUCED BY:



ADDRESS:

**150 E 62ND AVE,
VANCOUVER**

DATE:

03 MAR, 2021

ORIGINAL SCALE:

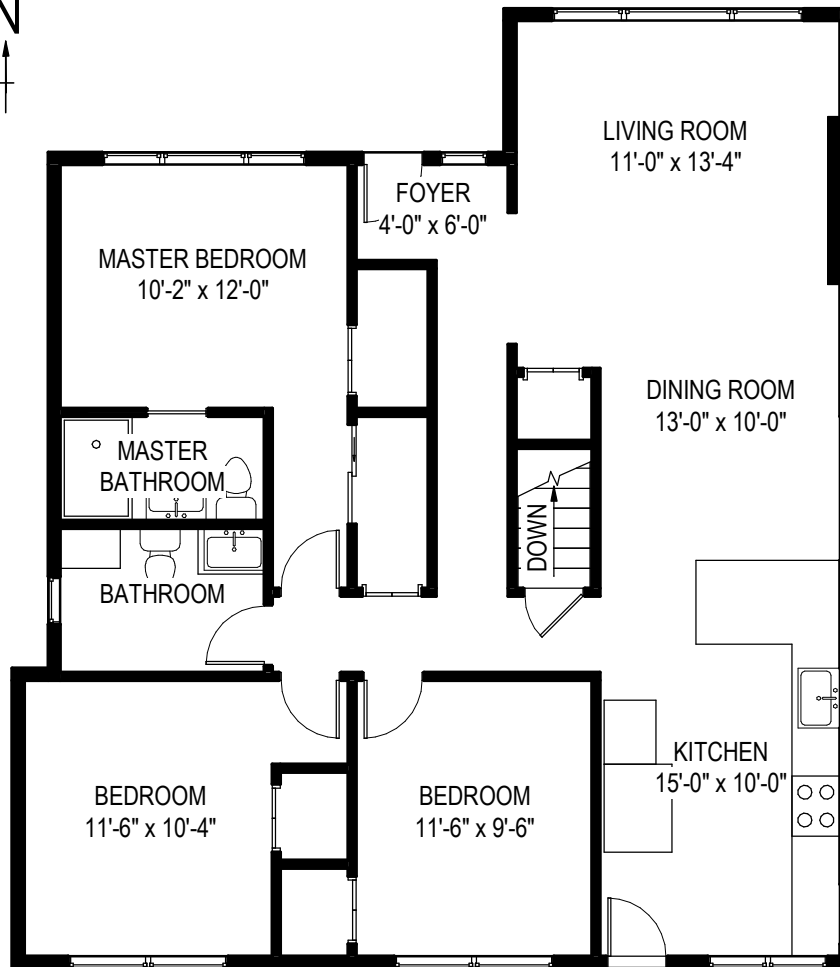
1/8" = 1'-0"

**MAIN FLOOR: 1,195
BELOW FLOOR: 925**

**TOTAL AREA:
2,120 SQ. FT.**

DISCLAIMER:

PLEASE NOTE THIS FLOOR PLAN IS FOR MARKETING PURPOSES AND IS TO BE USED AS A GUIDE ONLY. IT IS NOT INTENDED FOR ANY CONTRACT, WARRANTY OR ENGINEERING PURPOSES. ALL EFFORTS HAVE BEEN MADE TO ENSURE ITS ACCURACY AT TIME OF PRINT. CHANGES MAY BE MADE DURING THE DEVELOPMENT PROCESS AND DIMENSIONS, FIXTURES, FITTINGS, FINISHES AND SPECIFICATIONS ARE SUBJECT TO CHANGE WITHOUT NOTICE. WINDOW PLACEMENT, BALCONY CONFIGURATION, WARDROBE SIZES AND LIVING AREAS MAY VARY SLIGHTLY WITHIN EACH PLAN TYPE. PLEASE REFER TO CONTRACT DRAWINGS FOR MORE ACCURATE INFORMATION ON A PARTICULAR PROPERTY. ALL MEASUREMENTS ARE APPROXIMATE. THE ABOVE INFORMATION IS FROM SOURCES BELIEVED RELIABLE BUT SHOULD NOT BE RELIED UPON WITHOUT VERIFICATION. THE BROKERAGE AND THE AGENT ASSUME NO RESPONSIBILITY FOR ITS ACCURACY.



MAIN FLOOR PLAN

AGENT:
ALEX LEE
alexleesk@gmail.com
604-551-2828

PRODUCED BY:
 **Almond Tree**
Media Inc.

ADDRESS:
**150 E 62ND AVE,
VANCOUVER**

DATE:
03 MAR, 2021

ORIGINAL SCALE:
1/8" = 1'-0"

**MAIN FLOOR: 1,195
BELOW FLOOR: 925**
**TOTAL AREA:
2,120 SQ. FT.**

DISCLAIMER:
PLEASE NOTE THIS FLOOR PLAN IS FOR MARKETING PURPOSES AND IS TO BE USED AS A GUIDE ONLY. IT IS NOT INTENDED FOR ANY CONTRACT, WARRANTY OR ENGINEERING PURPOSES. ALL EFFORTS HAVE BEEN MADE TO ENSURE ITS ACCURACY AT TIME OF PRINT. CHANGES MAY BE MADE DURING THE DEVELOPMENT PROCESS AND DIMENSIONS, FIXTURES, FITTINGS, FINISHES AND SPECIFICATIONS ARE SUBJECT TO CHANGE WITHOUT NOTICE. WINDOW PLACEMENT, BALCONY CONFIGURATION, WARDROBE SIZES AND LIVING AREAS MAY VARY SLIGHTLY WITHIN EACH PLAN TYPE. PLEASE REFER TO CONTRACT DRAWINGS FOR MORE ACCURATE INFORMATION ON A PARTICULAR PROPERTY. ALL MEASUREMENTS ARE APPROXIMATE. THE ABOVE INFORMATION IS FROM SOURCES BELIEVED RELIABLE BUT SHOULD NOT BE RELIED UPON WITHOUT VERIFICATION. THE BROKERAGE AND THE AGENT ASSUME NO RESPONSIBILITY FOR ITS ACCURACY.