

## MAIN FLOOR PLAN

AGENT:  
 Mostafa Salimian Team 3000 Realty  
 mosalimian@hotmail.ca  
 604-307-6830

PRODUCED BY:  
 **Almond Tree**  
 Media Inc.

ADDRESS:  
**1545 EAGLE MOUNTAIN DR,**  
**COQUITLAM**

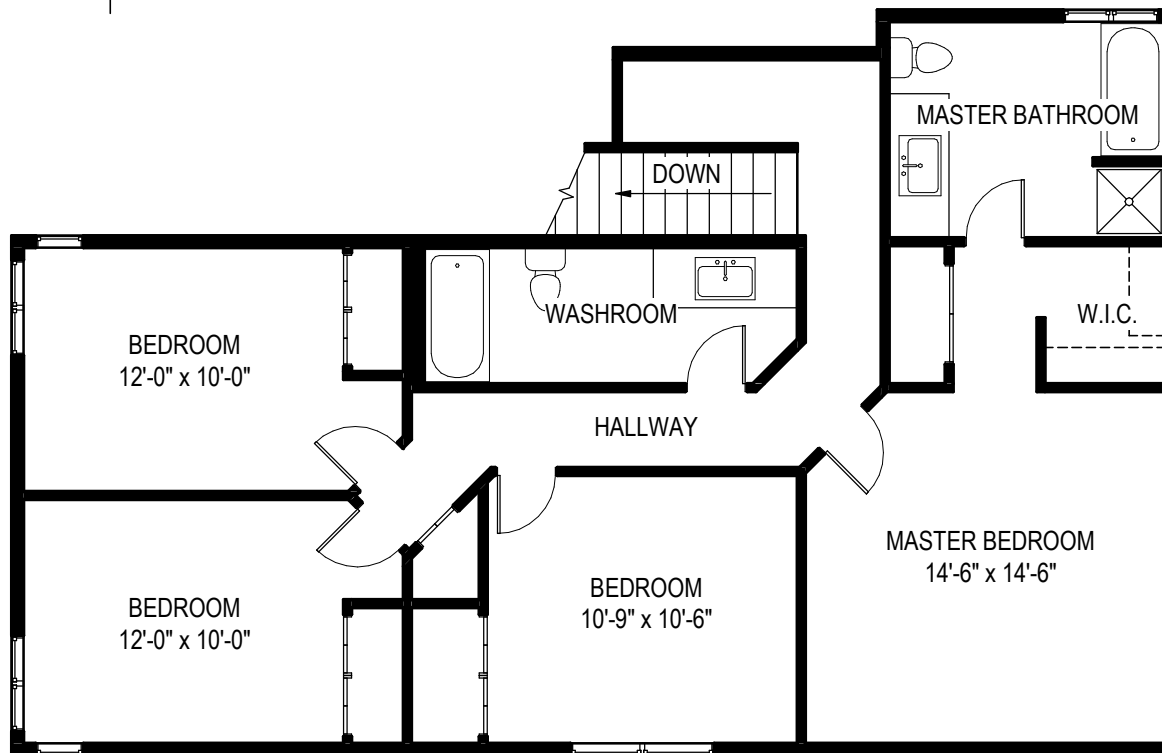
DATE:  
 29 MAR, 2021

ORIGINAL SCALE:  
 1/8" = 1'-0"

MAIN FLOOR: 1,060  
 ABOVE FLOOR: 1,036  
 BELOW FLOOR: 1,060  
 TOTAL LIVING AREA:  
 3,156 sq.ft.

GARAGE: 448  
 BALCONY: 253

**DISCLAIMER:**  
 PLEASE NOTE THIS FLOOR PLAN IS FOR MARKETING PURPOSES AND IS TO BE USED AS A GUIDE ONLY. IT IS NOT INTENDED FOR ANY CONTRACT, WARRANTY OR ENGINEERING PURPOSES. ALL EFFORTS HAVE BEEN MADE TO ENSURE ITS ACCURACY AT TIME OF PRINT. CHANGES MAY BE MADE DURING THE DEVELOPMENT PROCESS AND DIMENSIONS, FIXTURES, FITTINGS, FINISHES AND SPECIFICATIONS ARE SUBJECT TO CHANGE WITHOUT NOTICE. WINDOW PLACEMENT, BALCONY CONFIGURATION, WARDROBE SIZES AND LIVING AREAS MAY VARY SLIGHTLY WITHIN EACH PLAN TYPE. PLEASE REFER TO CONTRACT DRAWINGS FOR MORE ACCURATE INFORMATION ON A PARTICULAR PROPERTY. ALL MEASUREMENTS ARE APPROXIMATE. THE ABOVE INFORMATION IS FROM SOURCES BELIEVED RELIABLE BUT SHOULD NOT BE RELIED UPON WITHOUT VERIFICATION. THE BROKERAGE AND THE AGENT ASSUME NO RESPONSIBILITY FOR ITS ACCURACY.



## ABOVE FLOOR PLAN

AGENT:  
Mostafa Salimian Team 3000 Realty  
mosalimian@hotmail.ca  
604-307-6830

PRODUCED BY:  
 **Almond Tree**  
Media Inc.

ADDRESS:  
**1545 EAGLE MOUNTAIN DR,  
COQUITLAM**

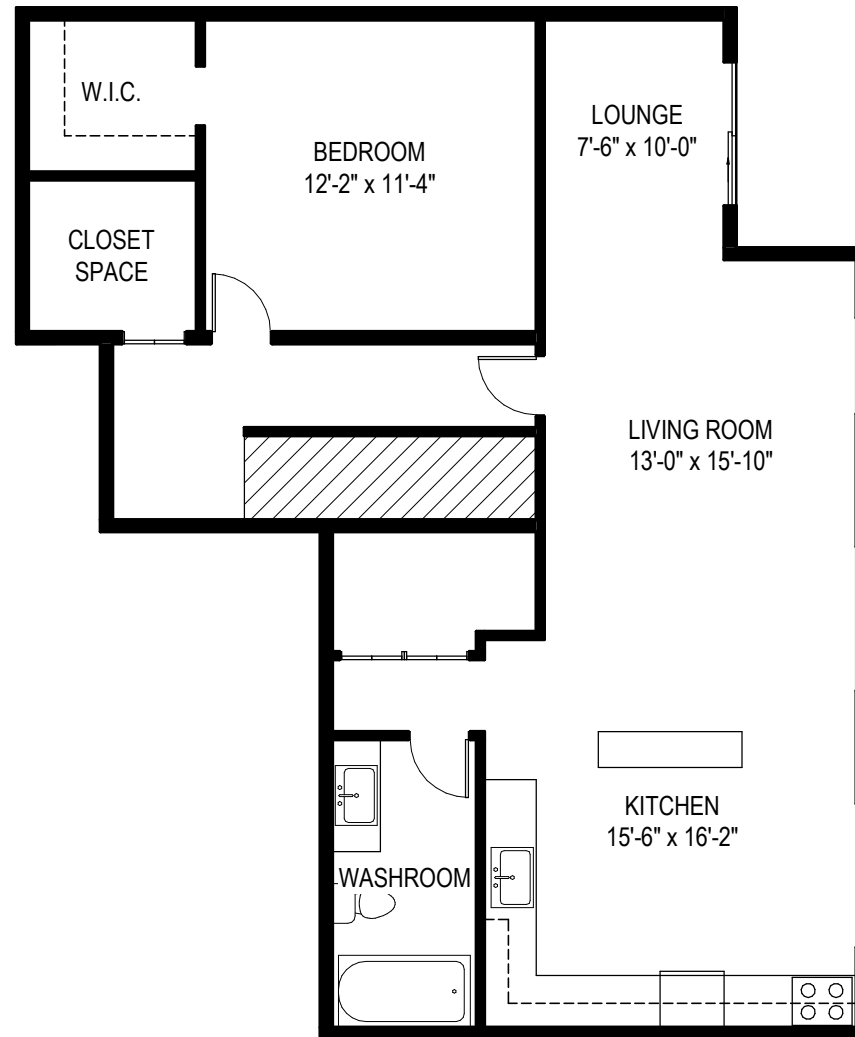
DATE:  
29 MAR, 2021

ORIGINAL SCALE:  
1/8" = 1'-0"

MAIN FLOOR: 1,060  
ABOVE FLOOR: 1,036  
BELOW FLOOR: 1,060  
TOTAL LIVING AREA:  
3,156 sq.ft.

GARAGE: 448  
BALCONY: 253

**DISCLAIMER:**  
PLEASE NOTE THIS FLOOR PLAN IS FOR MARKETING PURPOSES AND IS TO BE USED AS A GUIDE ONLY. IT IS NOT INTENDED FOR ANY CONTRACT, WARRANTY OR ENGINEERING PURPOSES. ALL EFFORTS HAVE BEEN MADE TO ENSURE ITS ACCURACY AT TIME OF PRINT. CHANGES MAY BE MADE DURING THE DEVELOPMENT PROCESS AND DIMENSIONS, FIXTURES, FITTINGS, FINISHES AND SPECIFICATIONS ARE SUBJECT TO CHANGE WITHOUT NOTICE. WINDOW PLACEMENT, BALCONY CONFIGURATION, WARDROBE SIZES AND LIVING AREAS MAY VARY SLIGHTLY WITHIN EACH PLAN TYPE. PLEASE REFER TO CONTRACT DRAWINGS FOR MORE ACCURATE INFORMATION ON A PARTICULAR PROPERTY. ALL MEASUREMENTS ARE APPROXIMATE. THE ABOVE INFORMATION IS FROM SOURCES BELIEVED RELIABLE BUT SHOULD NOT BE RELIED UPON WITHOUT VERIFICATION. THE BROKERAGE AND THE AGENT ASSUME NO RESPONSIBILITY FOR ITS ACCURACY.



## BELOW FLOOR PLAN

AGENT:  
Mostafa Salimian Team 3000 Realty  
mosalimian@hotmail.ca  
604-307-6830

PRODUCED BY:  
 **Almond Tree**  
Media Inc.

ADDRESS:  
**1545 EAGLE MOUNTAIN DR,  
COQUITLAM**

DATE:  
29 MAR, 2021

ORIGINAL SCALE:  
1/8" = 1'-0"

MAIN FLOOR: 1,060  
ABOVE FLOOR: 1,036  
BELOW FLOOR: 1,060  
TOTAL LIVING AREA:  
3,156 sq.ft.

GARAGE: 448  
BALCONY: 253

**DISCLAIMER:**  
PLEASE NOTE THIS FLOOR PLAN IS FOR MARKETING PURPOSES AND IS TO BE USED AS A GUIDE ONLY. IT IS NOT INTENDED FOR ANY CONTRACT, WARRANTY OR ENGINEERING PURPOSES. ALL EFFORTS HAVE BEEN MADE TO ENSURE ITS ACCURACY AT TIME OF PRINT. CHANGES MAY BE MADE DURING THE DEVELOPMENT PROCESS AND DIMENSIONS, FIXTURES, FITTINGS, FINISHES AND SPECIFICATIONS ARE SUBJECT TO CHANGE WITHOUT NOTICE. WINDOW PLACEMENT, BALCONY CONFIGURATION, WARDROBE SIZES AND LIVING AREAS MAY VARY SLIGHTLY WITHIN EACH PLAN TYPE. PLEASE REFER TO CONTRACT DRAWINGS FOR MORE ACCURATE INFORMATION ON A PARTICULAR PROPERTY. ALL MEASUREMENTS ARE APPROXIMATE. THE ABOVE INFORMATION IS FROM SOURCES BELIEVED RELIABLE BUT SHOULD NOT BE RELIED UPON WITHOUT VERIFICATION. THE BROKERAGE AND THE AGENT ASSUME NO RESPONSIBILITY FOR ITS ACCURACY.